

working on Little City Gardens, an urban farm in San Francisco. They are growing artisanal salad mix, braising mix, and culinary herbs, offering educational workshops, and providing a working model of urban food production.

#### Lulu McClellan - Handley Vineyards

Lulu graduated from UC Berkeley with a degree in rhetoric. She worked in Peru studying potato farming in indigenous cultures. She currently sells fruits and vegetables at the Berkeley farmer's market and at Bi-Rite Market in San Francisco. She is an aspiring farmer who hopes to combine her three favorite things--ferments, bicycles, and wool--into one working farm in the future.

#### Stephanie "Effie" Rawlings - East Bay activist

These days Stephanie enjoys good work in her own neighborhood, where Berkeley blends into Oakland, and collards rise indignant (or more probably, indifferent) to the billboards that steal a few hours of their sun each day. She is starting her third season co-managing Strong Roots Community Garden and her first month at BioFuel Oasis, a women-worker cooperative that serves urban farmers in the East Bay.

#### May Nugyen, Supervisor, Planting Justice

May began her food justice as a student at UC Berkeley with the Society for Agriculture & Food Ecology (SAFE). With her trusty team of student activists, she helped plan DIY workshops, published a zine of student-authored articles called "Lettuce Turnip the Beets", and organized town hall-style food & farming lectures. She works with "The Greenhorns," a New York-based non-profit who produced a documentary film about young farmers in America. She has done WWOOF'ing in Thailand and France, and studied the formation of intentional permaculture communities. She is constantly inspired by the love and dedication of urban farmers and community organizers across the country, and is stoked to be able to contribute to the continued transformation of Oakland communities in her work landscaping with Planting Justice.

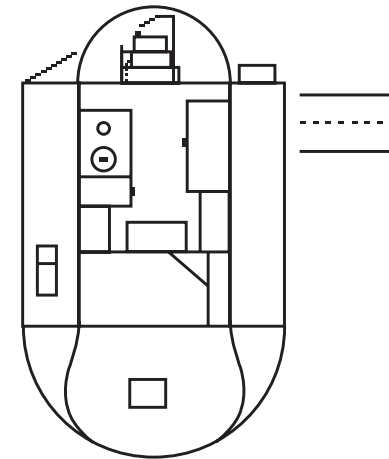
#### J. Stacey Sullivan, Policy Director, Sustainable Conservation

Stacey directs Sustainable Conservation's growing involvement in public policy issues. He retired from the California State Assembly in November 2008 after a 12-year career as a consultant for the Natural Resources Committee and Budget Subcommittee #3 (Resources) and, for the last eight years, as Chief Consultant to the Local Government Committee. His work while with the Assembly included in-depth involvement in significant legislation and policy initiatives concerning the California Environmental Quality Act, water policy, sustainable agriculture, housing and land use planning.

Stacey is currently a Member of the Board of Directors of the Community Alliance with Family Farmers (CAFF) and the Steering Committee of the Central Coast Rangeland Coalition. He was educated at the University of California, Santa Cruz, University of Oxford and King Hall School of Law at the University of California, Davis.

## Strategies of a New Environmental Activism

Saturday Feb. 11th, 2012



Hosted by:

Amy Franceschini, Fernando Garcia Dory & Anya Kamen-skaya of the Greenhorns in conjunction with the *Land, Use* exhibition at the David Brower Center.

In conjunction with the, *Land, Use* exhibition *Strategies of a New Environmental Activism* is a participatory, action research happening, including film screenings, potluck, and a generative exchange around new modes of action, ethics and dreams. As artists working with the David Brower Center we find it imperative to extend an invitation to the rich community of aligned practitioners- together we will share our work, struggles and imagined potentials. Building upon the strategies David Brower used within various contexts and mediums, we ask how we can together imagine the most creative, sustainable paths towards a new environmental movement. A collaborative map/chart will be generated alongside the discussion. This map will reside in the gallery for the duration of the exhibition.

-Amy Franceschini and Fernando Garcia Dory

#### Participants:

Peter K. Buckley, Founder, David Brower Center  
Brooke Budner, Little City Gardens, Urban gardener, artist  
Brittany 'Cole' Bush, Starcreek Ranch Grazing Co.  
Lucas Foglia, Photographer  
Caitlyn Galloway, Little City Gardens, Urban gardening, artist  
Lulu McClellan - Handley Vineyards  
May Nuygen - Supervisor, Planting Justice  
Stephanie "Effe" Rawlings - East Bay activist  
Stacey Sullivan - Sustainable Conservation  
Houston Wilson - Vineyard Agroecology, UC Berkeley  
James Wilson - Naturalist, East Bay Regional Parks  
Bradford White, Starcreek Ranch Grazing Co.

#### Program:

1pm-1:15 Arrive/ Welcome / See exhibition  
\**Knowledge by Hand* + \*\**Land Use* Chart Screened

1:15-1:25 Introduction/ Trajectory of Day

1:30-1:55 Brief Participant Introductions /Bread breaking...

1:45-2:30 \*\*\*Food /Informal discussion of participant questions.

2:30 - 2:50 Group Sessions

2:50-4pm Group Presentations/Discussion/Mapping

4:30-6:30pm *Our Land* Screening/ Potluck

#### Participant Biographies:

##### **Peter K. Buckley, Founder, David Brower Center**

Peter co-founded the Center for Ecoliteracy in 1995 after a career as CEO of Esprit-Europe and Esprit-International, and an earlier career as an attorney in San Francisco. He is co-founder of Greenwood School, a K-8 school with an environmental emphasis, in Mill Valley, California. He also serves on the boards of Conservation Land Trust and Conservacion Patagonia.

##### **Brooke Budner, Little City Gardens, San Francisco**

Brooke is an artist and urban food gardener. She was trained as a painter at the Rhode Island School of Design, as a farmer on organic farms on the east coast and as a cheesemaker in Italy. She spent one year at the Occidental Arts and Ecology Center studying bio-intensive gardening and permaculture design. She is passionate about building community, creating sustainable food systems and translating aspects of rural homesteading to life in the city. She is the co-founder of Little City Garden, a 3/4 acre urban farm in San Francisco and an experiment in the economic viability of small-scale urban market-gardening.

##### **Brittany 'Cole' Bush, Starcreek Ranch Grazing Co.**

Cole is a self-described 'super action hero in-training' working with animals, the land and people. She studied Sustainable Development, Community Design and Agroecology at UC Santa Cruz while living on a DIY hillside neighborhood called Trout Gulch in Aptos. Cole has worked at Star Creek Ranch for 3 years photo documenting the affects of holistic managed grazing using both sheep and goats, learning to work with herding dogs and monitoring the grazing program. She is now shepherding and managing a new contract grazing project to graze over 300 acres of East Bay Regional Parks District with Starcreek Ranch animals. She is an aspiring butcher, acrobat and land steward working to live out her dream as a super-action hero in local agriculture and land stewardship.

##### **Lucas Foglia, Photographer**

Lucas Foglia makes photographs about places where wilderness and culture intersect: people moving off the grid in the American Southeast; mining boom towns, and ranching and farming communities in the rural West. Lucas was raised on a small family farm in Long Island and is currently based in San Francisco. A graduate of Brown University and the Yale School of Art, Lucas exhibits and publishes his photographs internationally. His work is in the permanent collections of the Museum of Fine Arts Houston and the Rhode Island School of Design Museum of Fine Art. His photographs have been published in Aperture Magazine, the New York Times Magazine and the Washington Post Magazine. His first book, *A Natural Order*, will be published by Nazraeli Press in Spring 2012.

##### **Caitlyn Galloway, Little City Gardens, San Francisco**

Caitlyn is a co-owner of Little City Gardens, a practicing artist, and a professional sign painter. She is passionate about combining her love for farming, art, and building communities. Caitlyn is primarily occupied, along with Brooke Budner,

### James Wilson, Naturalist, East Bay Regional Parks

James joined the Park District as a volunteer with the Fisheries Department at age 7. He became a Tilden Junior Ranger at 9 years old, and joined the staff team as a Naturalist Aide in 2006. He was hired as a full-time Naturalist in 2008. James earned a B.A. degree in Environmental Studies from the University of California at Santa Cruz, and has completed significant course work in Natural History, Science Communication, and Agro-Ecology. James' previous work includes positions at the UC Santa Cruz Natural History Museum and California Department of Fish and Game. James has boundless enthusiasm for facilitating safe nature "adventures," big and small, for people young and old. From these simple encounters, he believes a world of respect and a sense of stewardship come forth. Along with nature-based programs, James has a deep respect for old-world domesticated plants and animals. He routinely harvests, collects, milks, propagates, clones, and shares all this knowledge and bounty with the public at large.

### Houston Wilson - Vineyard Agroecology, UC Berkeley

Houston is a graduate student at UC Berkeley who conducts research to reduce pesticide use in agriculture. He studies agroecology, more specifically agronomy, entomology, insect ecology and landscape ecology. For the past 4 years his lab has been running a collaborative research project with North Coast wine grape growers (30+ growers) to develop a set of on-farm practices that can reduce pesticide use by enhancing biological control of a couple vineyard pests.

Houston is interested in the relationship between biodiversity and ecosystem services (like biological control). His work is focused on the use of flowering ground covers in vineyards as a means to attract and sustain beneficial insects that can potentially reduce pest populations. He is trying to understand if the "landscape context" within which a vineyard is situated influences the ability of these flowers to enhance biological control of pests.

\**Knowledge by Hand*, film provided by Anna Kondich, Basque cultural organizer, edited by Amy Franceschini + Fernando Garcia Dory

\*\**Classification of Land Uses* Chart, Master Plan of Land Use, County of Los Angeles, 1941.

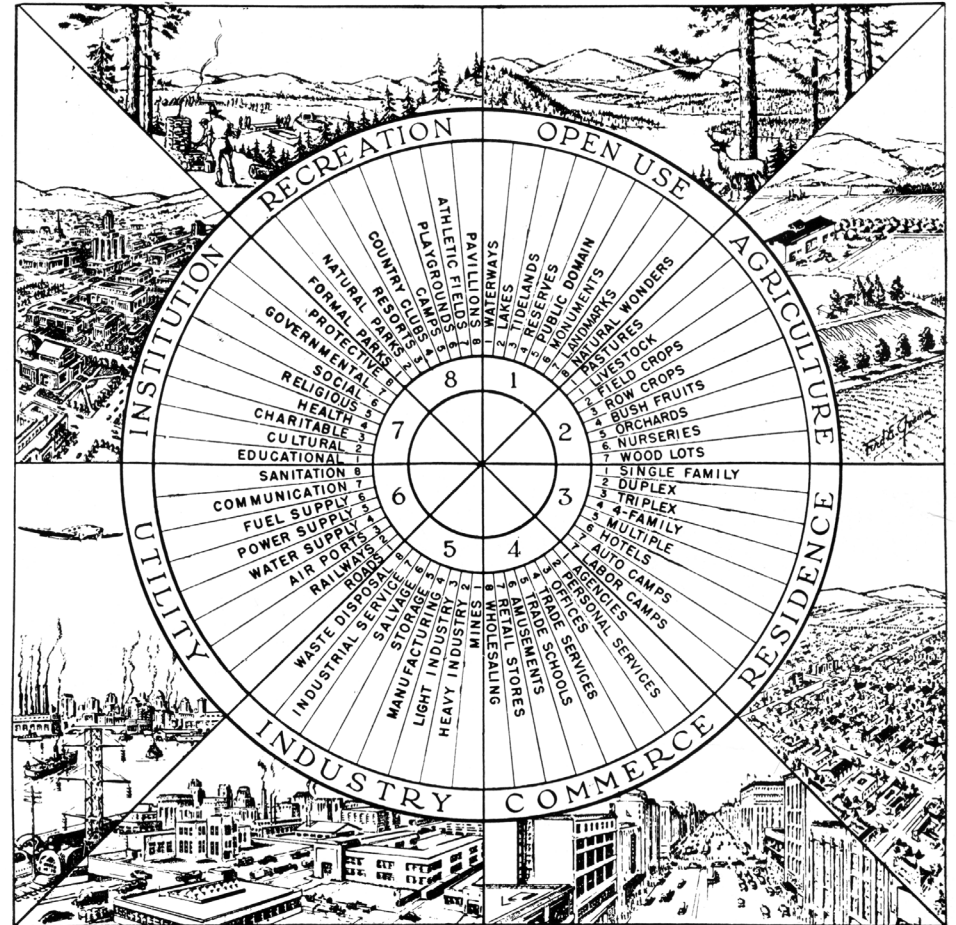
\*\*\*Food prepared and imagined by Andrew Nimmo, Berkeley, CA

Andrew is a graphic designer, fervent mushroom forager, and closet chef extraordinaire. He has a growing interest in the native nutritional and medicinal foods that were staples before manifest destiny reached the West Coast. Virtually none of these are currently in the Californian diet.

### Notes:

*One cannot build life from refrigerators, politics, credit statements and crossword puzzles. That is impossible. Nor can one exist for any length of time without poetry, without color, without love.*

-Antoine de Saint- Exupéry



## CLASSIFICATION OF LAND USES